



COPPIN STATE UNIVERSITY

HIGHLIGHTING RESEARCH, EDUCATION AND
OUTREACH IN OUR HEALTH AND HUMAN SERVICES
BUILDING

AREAS FOR COLLABORATION

COPPIN STATE UNIVERSITY: *TRANSFORMING LIVES!*

We invest in transformation

Historically black institution in a
dynamic urban setting

Serve a multi-generational student
population

Promote lifelong learning,
leadership, social responsibility,
civic and community engagement,
cultural diversity and inclusion, and
economic development.



HEALTH AND HUMAN SERVICES BUILDING

This building has two missions – to promote the University’s commitment to our community by virtue of its expansive clinical and community outreach programs within the HHSB and serve as a signature building on our South Campus.



FACILITIES AND SPECIALIZED EQUIPMENT-HELENE FULD SCHOOL OF NURSING



COMMUNITY HEALTH CENTER

The Center provides readily accessible, low cost, high quality care

Services of the Center emphasize health promotion and prevention of disease. The goal of the Center is to improve the health of persons who reside in areas adjacent to the University. Services are provided by nurse practitioners, faculty and students of the College of Health Professions, and in some instances, by a physician. All professional personnel are properly licensed by the State of Maryland.



SIM CENTER

Located on the 4th floor of the Health and Human Services Building (HHSB)

- 4 clinic examination rooms and a ten room, 26 bed simulation laboratory. The SimCenter is home to 19 high and low fidelity adult, child and infant simulators.

Each simulation laboratory is fully equipped with actual, functional equipment simulating medical–surgical, pediatric, maternal-child, and community health settings.



FACILITIES AND SPECIALIZED CENTERS-BEHAVIORAL AND SOCIAL SCIENCES

Department of Psychology,
Counseling and Behavioral Health
Ticket to Work Program

CSU Employment Network
Thru Social Security
Administration
For Persons with Disabilities



CSU is an official Employment Network providing orientation to TTW process, services provided (counseling, assessment & job placement), intake, return to work and successful case closure



Purpose:

Heighten awareness of national and international human rights and social justice issues that impact marginalized populations and communities thru:
Curriculum & program development,
Research & publication,
Lecture series,
Teaching social justice, policy & practice
Student engagement in action research

Department of Social Work's
Dr. Dorothy I. Height Center
for
Advancement of Social Justice

BISHOP L. ROBINSON SR. JUSTICE INSTITUTE

Provides a prototype for customized cross-disciplinary training programs that link cutting-edge research to field practice



Housed in a state-of-the-art facility that includes all smart classrooms, a state-of-the-art forensics laboratory, a moot court room and a crime scene

Department of Criminal Justice and Law Enforcement

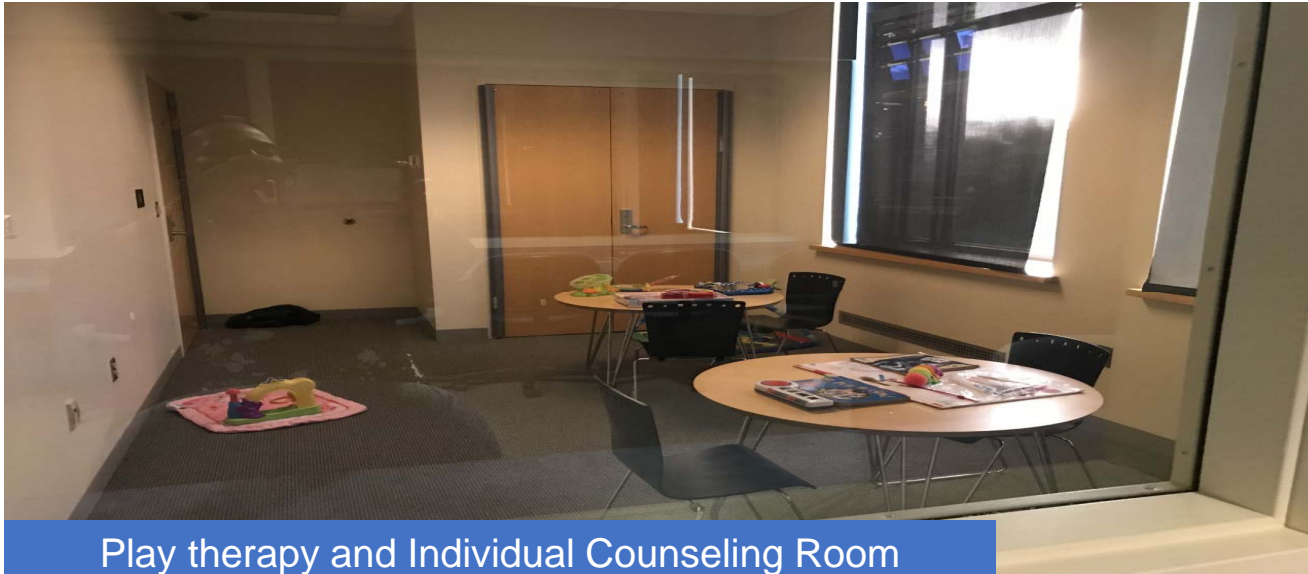
WORKFORCE ENHANCEMENT AND RESEARCH

Critical shortage and high-growth areas such as correctional services, health care, parole counseling, homeland security, police support for school systems, transit systems, and private security details.

- Effective policy and service delivery
- Foster effective partnerships between criminal justice, law enforcement, corrections, public safety, public health and non-



Counseling, Psychology and Social Work



Play therapy and Individual Counseling Room



Observation Rooms

Rehabilitation Counseling Program Independent Living Lab

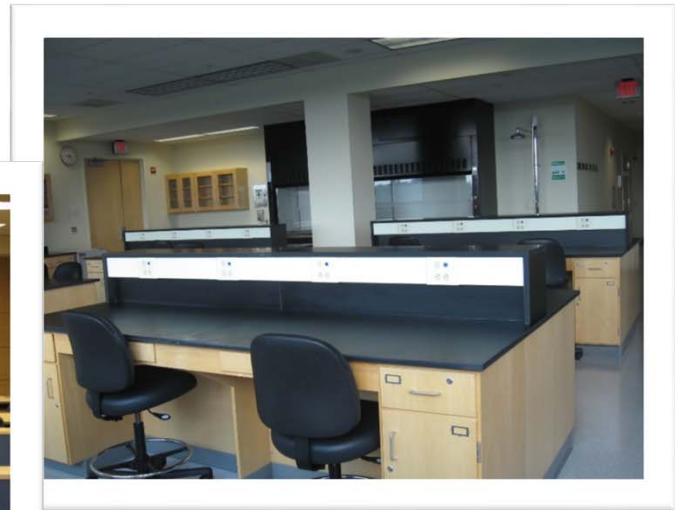
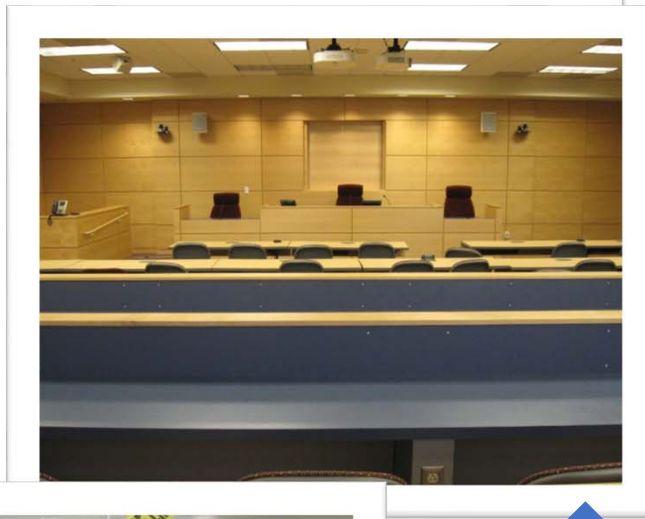


Observation Rooms



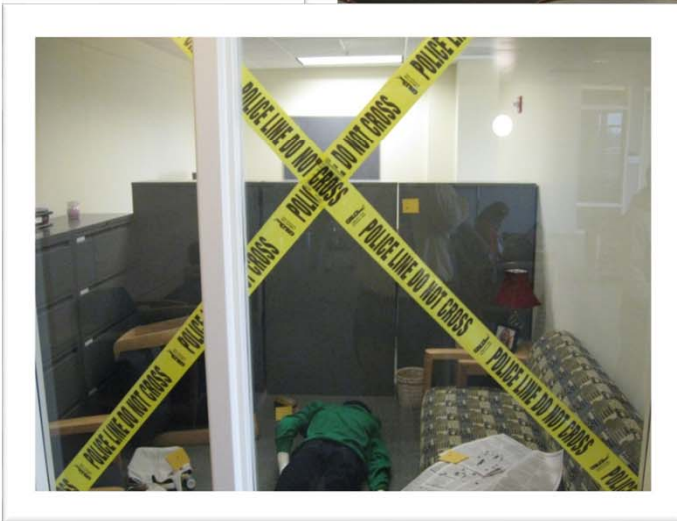
Independent Living Lab includes living room, dining room, stairs, bedroom and bathroom

Criminal Justice



Forensic Laboratory

Moot Courtroom



Crime Scene Room

Recent Research and Proposals

Title	Dates	Agency	Amount
Inclusive Higher Education Program Development for Students with Intellectual Disabilities	2019-2021	MDH	325,000
HBCU to Support MSN Education, Simulation, and Development	2018-2019	Dept of Ed	464,000
CAMMRAD Platform for Improving Trauma Skills	2018-2019	Dept of Defense	42,314
School-Based Health Center (SBHC)	2017-2019	MSDE	27,960



STATE AGENCY AND CSU INTERAGENCY OPPORTUNITIES

- Support and/or coordination of overdose prevention and Community Based Organizations Opioid Prevention Education
- Tobacco control and public health policy
- Policy Development, Health Promotion and Prevention, Strategies, Technical Support and Training including HIV and AIDS Prevention
- Provide services for the treatments-- Maryland Medicaid Pharmacy Program
- Technical support to Medicare health services
- Provide medical, clinical and programmatic consultation and technical assistance to the Maryland family planning and reproductive health program.
- Wellness policies and practices
- Quality control for food supplements
- Mission Recovery Peer Training Program
- Assistance with Public Health emergency preparedness and analysis of microbial pathogens
- Social Services and Social Work Training and Research for Adults, Children and Families
- Social Work research initiatives
- Addictions counseling research and initiatives
- Rehabilitation counseling research and initiatives
- Research initiatives around human services administration
- Policy development around mental health issues in urban areas impacting minority and marginalized populations
- Coordination of non-profit start-ups for working with parents and family of mental health patients





STATE AGENCY AND CSU INTERAGENCY OPPORTUNITIES



- Sexual Assault Prevention and Victim Advocacy Services
- Services for the Maryland work-based learning collaborative youth programs
- Research support of welfare reform
- Research and technical assistance for various state agencies
- Analysis and report on injury related bills
- Environmental monitoring
- Technology assistance and data analytics and management
- Credit and non-credit training
- Program outcome assessment
- Competency based trainings
- Maryland State Police technical services
- Literature review
- Quarterly employment report and analysis
- Support for a Center for Professional and Community Development in West Baltimore that will provide workforce development, job enhancement workshops and certifications, and start-up incubator services for persons interested in medical and mental health fields (e.g. in areas such as preparation for working in a medical examiner's office, peer facilitation)



AGILE TEAM OF COLLABORATORS



DR. TRACEY MURRAY

tmurray@coppin.edu

410-951-6100

Dean and Professor of the
College of Health Professions
and Director of the Health
Centers at Coppin



DR. BEVERLY O'BRYANT

BOBryant@coppin.edu

410-951-2666

Founding Dean
College of Behavioral and Social
Sciences
Executive Director, Bishop L.
Robinson, Sr. Justice Institute



DR. DIANNA VASS

dvass@coppin.edu

410-951-3809

Director, Office of Sponsored
Programs and Research





OUR COMMUNITY SERVICES, RESEARCH EXPERTISE AND OUR FACILITIES CAN HELP YOU *TRANSFORM LIVES*

PRINCIPAL POINT OF CONTACT: DR. DIANNA VASS
DIRECTOR OF SPONSORED PROGRAMS AND RESEARCH
410 951 3809
DVASS@COPPIN.EDU

Institutional Profile

Founded: 1900

Operating Budget: \$94.3 Million

Fall 2018 Enrollment: 2,738

Degrees Awarded: 491

•Baccalaureate: 405

•Master's: 74

•Doctorate: 6

*Note: 6 multiple majors were awarded, making a total of 491 degrees.

Tuition and Fees:

•\$7,474 In-State

•\$13,622 Out-of-State



ACADEMIC GRADUATE PROGRAMS

MASTER'S DEGREES



- [Education in Curriculum and Instruction](#)
- [Master of Education in Rehabilitation Counseling](#)
- [Master of Education in Special Education](#)
- [Master of Science in Addictions Counseling](#)
- [Master of Science in Adult and Continuing Education](#)
- [Master of Science in Criminal Justice and Law Enforcement](#)
- [Master of Science in Human Services Administration](#)
- [Master of Science in Nursing](#)

Doctoral Degrees

- [Doctor of Nursing Practice](#)

- [Post Master's Counseling Licensure](#)
- [Post Master's Nursing Certification](#)
- [Post Master's Public School Administrator I](#)
- [Post Baccalaureate Assistive Technology](#)
- [Post Baccalaureate Forensic Investigations](#)
- [Post Baccalaureate Investigative Science](#)
- [Post Baccalaureate Job Development and Job Placement Services](#)
- [Post Baccalaureate Policing Strategies](#)
- [Post Baccalaureate Vocational Evaluation and Work Adjustment](#)



GRADUATE CERTIFICATES

